



# Product Knowledge 2020



**HMS Outreach Team**



# HMS STAFF (DIRECTORS)



Ms Lynn Fong  
*Director*



Ms Chia Yee Ling  
*Deputy Director*  
*(Admin and Resource Planning Arm)*



ABM

ECDE

CDT

CMC

CHS

TSE

# HMS STAFF (DIRECTORS)



Mr Chionh Chye Aik  
*Deputy Director*  
*(Student Development)*



Ms Nor Ashikin  
*Deputy Director*  
*(Academic)*



ABM

ECDE

CDT

CMC

CHS

TSE

## HMS STAFF (DIRECTORS)



Dr Theophila Chua  
*Assistant Director*  
*ABM Course Chair*



Dr Glen Ng  
*Assistant Director*



ABM

ECDE

CDT

CMC

CHS

TSE

# HMS STAFF (DIRECTORS)



Dr Lucy Chew-Quek  
*Campus Head*  
*(NIEC)*



Ms Tham Foong Chue  
*Deputy Campus Head*  
*(NIEC)*



ABM

ECDE

CDT

CMC

CHS

TSE

# HMS STAFF (COURSE CHAIRS)



Ms K Pannirselvam  
Maygalai  
TSE Course Chair



Dr Kang Ger-Wen  
CHS Course Chair



Mr Matthew Wong  
CDT Course Chair



Ms Norami Aliza Haron  
ECDE Course Chair

ABM

ECDE

CDT

CMC

CHS

TSE



# HMS STAFF (COURSE CHAIRS)



Ms Christina Van Huizen  
ECDE Course Chair



Ms Jean Ong  
ECDE Course Chair



Ms Charleen Teh  
CMC Course Chair



ABM

ECDE

CDT

CMC

CHS

TSE

# DIPLOMAS IN HMS

1. Arts Business Management
2. Early Childhood Developmental Education
3. Community Development
4. Chinese Media and Communication
5. Chinese Studies
6. Tamils Studies with Early Education



ABM

ECDE

CDT

CMC

CHS

TSE





YEAR 1

YEAR 2

YEAR 3



## ARTS BUSINESS MANAGEMENT

ABM

ECDE

CDT

CMC

CHS

TSE

**A UNIQUE BUSINESS DIPLOMA ANCHORED IN THE CREATIVE  
ARTS INDUSTRY JOINTLY OFFERED BY HMS AND BA**





**YEAR 1**

**YEAR 2**

**YEAR 3**

**ABM**

**ECDE**

**CDT**

**CMC**

**CHS**

**TSE**

- Get an introduction to the arts through modules such as:
  - Introduction to Arts and Heritage Management
  - Introduction to the Arts 1: Music and Visual Art
  - Introduction to the Arts 2: Theatre and Dance
- Learn about social Psychology and other modules to enhance public knowledge and exposure to the arts
  - Social Psychology
  - Economics
  - Education, Outreach and Community Arts





YEAR 1

YEAR 2

YEAR 3

- Learn about marketing and arts business, and gain insight into talents and artists management through
  - Human Capital Management
  - Arts Marketing and Communication
  - Festival and Event Management
  - Talent and Artist Management

ABM

ECDE

CDT

CMC

CHS

TSE





YEAR 1

YEAR 2

YEAR 3

ABM

ECDE

CDT

CMC

CHS

TSE

- Learn about arts regulation, policy and governance as well as museum and art gallery management.
  - Art Regulation, Policy and Governance
- Embark on a 6 month internship.





An annual one day multi-disciplinary, community arts festival conceptualised and organised by year 2 ABM students. It features local artists ranging from music, theatre, dance, and visual arts, and they are all self-sourced.

ABM

ECDE

CDT

CMC

CHS

TSE



# 'O' LEVEL SUBJECTS AND GRADES

ELR2B2-B for AY 19/20: 8

English Language: 1-6

Mathematics (Elementary/Additional): 1-6

Any other subjects: 1-6

Applicants must have also sat for a Humanities subject OR Art/Music OR Principles of Accounts and fulfil the aggregate computation requirements



ABM

ECDE

CDT

CMC

CHS

TSE

## COMMON MISCONCEPTIONS

Does my child have to take Art as a subject in secondary school to qualify for ABM?

- No. Any subject categorised under the ELR2B2-B can be used to qualify for ABM.

Does my child need to be well-versed in art to be in ABM?

- No. ABM is an arts management course where students learn how to manage the arts, and work behind the scenes.



ABM

ECDE

CDT

CMC

CHS

TSE

# COMMON MISCONCEPTIONS

Can ABM graduates become artists?

- No. The course equips students with the necessary skill set to manage arts but not to become artists.

ABM

ECDE

CDT

CMC

CHS

TSE





## FURTHER STUDIES

ABM graduates get to enjoy up to one semester's exemption for relevant degree programmes at NUS/NTU

ABM

ECDE

CDT

CMC

CHS

TSE

Up to one year's exemption for overseas programmes from universities in Australia

- The Australian National University
- Edith Cowan University
- Queensland University of Technology
- The University of Sydney
- Murdoch University



## Career Prospects

- Arts Manager
- Arts Entrepreneur
- Sales Representative
- Human Resource Executive
- Community Development Officer

## Industry Partners

- Government agencies  
(Eg: People's Association)
- Performing Arts  
(Eg: Theatreworks & Arts House)
- Visual Arts  
(Eg: Singapore Art Museum & Malay Heritage Centre)

# QUIZ TIME!

• • • • •



YEAR 1

YEAR 2

YEAR 3



## EARLY CHILDHOOD DEVELOPMENT & EDUCATION

ABM

ECDE

CDT

CMC

CHS

TSE

CONDUCTED BY THE NATIONAL INSTITUTE OF EARLY  
CHILDHOOD DEVELOPMENT (NIEC) IN COLLABORATION WITH  
NP TO TEACH STUDENT TO UNDERSTAND CHILD GROWTH AND  
DEVELOPMENT



# NIEC (NATIONAL INSTITUTE OF EARLY CHILDHOOD DEVELOPMENT)

- A training institute set up by MOE
- Focus on strengthening foundational training for Early Childhood educators
- Early Childhood courses in Ngee Ann Poly, Temasek Poly, ITE, and SEED Institute will come under NIEC



ABM

ECDE

CDT

CMC

CHS

TSE

# NIEC (NATIONAL INSTITUTE OF EARLY CHILDHOOD DEVELOPMENT)

- Practice-based learning within context of EC work culture
- A global perspective with overseas study and exchange opportunities
- Cross-campus learning (electives, workshops, etc.)
- Unified foundational training across campuses



ABM

ECDE

CDT

CMC

CHS

TSE



YEAR 1

YEAR 2

YEAR 3

ABM

ECDE

CDT

CMC

CHS

TSE

- Build strong foundation in understanding child development, early childhood care and education for infants and young children.
  - Child Development 1 & 2
  - Motor Skills Development
  - Language and Literacy
- Apply and hone skills in WEEKLY field practicum





YEAR 1

YEAR 2

YEAR 3

- Strengthen knowledge regarding holistic development of a child
  - Curriculum Planning and Implementation
  - Early Numeracy
  - Social Emotional Learning
- Apply and hone skills in WEEKLY field practicum

ABM

ECDE

CDT

CMC

CHS

TSE





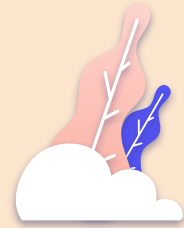


YEAR 1

YEAR 2

YEAR 3

- Deepen knowledge in an area of YOUR interest (Up to 2 electives); **OR** 3 electives in the Early Intervention track to receive Diploma in ECDE (Early Intervention)\*
  - Music and Dance for young children
  - Children's literature
  - Assessment of young children\*
  - Childhood disorder and disabilities\*
  - Early Interventions and Teaching Approaches\*
- Internship Programme



ABM

ECDE

CDT

CMC

CHS

TSE

## COMPLETE LIST OF ELECTIVES IN NP

- Assessment of Young Children\*
- Childhood Disorders & Disabilities\*
- Early Intervention & Teaching Approaches\*
- Assessment & Differentiated Instructions
- Capstone Project
- Children's Literature
- Drama for Pre-school Education
- Issues & Trends in Early Intervention
- Music & Dance for Young Children
- Teaching Literacy to Diverse Learners



ABM

ECDE

CDT

CMC

CHS

TSE

# COMPLETE LIST OF ELECTIVES IN TP

Temasek Poly:

- 2D & 3D Art\*
- Digital and New Media\*
- Book Illustrations & Design for Children\*
- Classroom Management & Strategies In Early Childhood Intervention
- Early Intervention & the Inclusive Curriculum
- Transcultural Issues & Practices in Early Childhood

\*= Diploma in ECDE (Visual Arts)



ABM

ECDE

CDT

CMC

CHS

TSE

## 'O' LEVEL SUBJECTS AND GRADES

ELR2B2-B for AY 19/20: 17

English Language: 1-6

Mathematics (Elementary/Additional): 1-6

Any other subjects: 1-6

All applicants with a C5 or C6 in EL are given 2 years to obtain at least a B4 or any acceptable EL alternatives.

Students with a D7 in math may apply for the course provided they have passed 5 others subjects.



ABM

ECDE

CDT

CMC

CHS

TSE

## COMMON MISCONCEPTIONS / FAQs

Can a ECDE graduate become a Principal upon graduation?

- No. Students need to complete the Advanced Diploma in Early Childhood Leadership (ADECL). Experience is also necessary.

What is the difference between NP and TP, since they offer the same Diploma?

- Temasek Poly specialise more on Visual Arts, whereas Ngee Ann Poly specialise more on Early Intervention. However, both TP and NP are under NIEC so they would be learning the same fundamental skills.



ABM

ECDE

CDT

CMC

CHS

TSE

## FURTHER STUDIES

Singapore University of Social Sciences

Bachelor of Early Childhood Education with Minor

(Enjoy up to 1 year's worth of credits exemption)

CET Academy in NP (to pursue an Specialist/Advanced Diploma)

- ☐ Early Childhood Learning Support
- ☐ Early Childhood Intervention (Special Needs)
- ☐ Early Childhood Leadership
- ☐ Early Childhood Teaching & Learning



ABM

ECDE

CDT

CMC

CHS

TSE

## CAREER PROSPECTS

- ❑ Preschool teacher
- ❑ Early Intervention teacher assistant
- ❑ Special education teacher assistant
- ❑ Writer and Illustrator for children's resources



ABM

ECDE

CDT

CMC

CHS

TSE

# QUIZ TIME!







YEAR 1

YEAR 2

YEAR 3



## COMMUNITY DEVELOPMENT

**A MERGER BETWEEN PSYCHOLOGY STUDIES AND BUSINESS  
SOCIAL ENTERPRISE. CONTAINS ELEMENTS OF BOTH COURSES  
STUDENTS NOT ONLY LEARN ABOUT SOCIAL ISSUES BUT ALSO  
LEARN TO CREATE SUSTAINABLE SOLUTIONS**



ABM

ECDE

CDT

CMC

CHS

TSE



YEAR 1

YEAR 2

YEAR 3

- Embark on a community Kickstarter journey to learn about the needs of the community and get an introduction to Psychology, Sociology and Social Services
  - Community Development and Social Services
  - Fundamentals of Sociology
  - Introduction to Psychology
  - Social Innovation and Entrepreneurship
  - Introduction to Research Method and Statistics



ABM

ECDE

CDT

CMC

CHS

TSE



YEAR 1

YEAR 2

YEAR 3

- Learn professional skills in areas such as managing social service organizations, marketing and communication, conducting research, counselling and group facilitation.
  - Project and Event Management
  - Group Dynamics and Facilitation
  - Research Methods for Social Services
  - Community Psychology and Advocacy
  - Sponsorship and Volunteer Development



ABM

ECDE

CDT

CMC

CHS

TSE



YEAR 1

YEAR 2

YEAR 3

- Work on an Integrated Project whilst in Practicum and embark on a 6-month Internship
- Practicum with Integrated Project
  - Work on a project that allows them to apply what they have learnt in their 3 years of studies while undergoing a practicum at an organization.  
Student will collaborate with the organization to EITHER start their own social enterprise or undertake a project for a community.
- 6-month Internship



ABM

ECDE

CDT

CMC

CHS

TSE



## 'O' LEVEL SUBJECTS AND GRADES

ELR2B2-B for AY 19/20: 9

English Language: 1-6

Mathematics (Elementary/Additional): 1-6

Any other subjects: 1-6

Applicants must also have sat for one subject listed in the 1st group of relevant subjects and another different subject listed in the 2nd group of relevant subjects for the ELR2B2-A Aggregate Type.



ABM

ECDE

CDT

CMC

CHS

TSE



## COMMON MISCONCEPTIONS / FAQs

Is CDT just about community service?

- No. It also covers various aspects of management, psychology and entrepreneurship to enable graduates to be effective practitioners in the social service sector.

Can CDT graduates be a social worker upon graduation?

- No. Further studies are required in this field.



ABM

ECDE

CDT

CMC

CHS

TSE



## FURTHER STUDIES

- CDT graduates may pursue studies in institutions of higher learning. As the CDT is a broad-based diploma, graduates have a wide array of study choices, including those in the social sciences, humanities and business.

ABM

ECDE

CDT

CMC

CHS

TSE





ABM

ECDE

CDT

CMC

CHS

TSE

## INDUSTRY PARTNERS

### Social Services Organizations

- Metropolitan YMCA
- Ang Mo Kio Family Service Centre
- REACH Family Services

### Social Enterprises

- Adrenalin Group
- Singapore Centre for Social Enterprise
- Popejai Thai Restaurants

### Corporates with CSR

- SAP
- DBS Bank
- Singtel
- DHL e-Commerce

## CAREER PROSPECTS

- Community development assistants
- Youth work associates
- Volunteer/Programme executives, social work assistants
- Marketing, HR, event management executives in social enterprises, non-profit and business organisations
- Start your own social enterprise





# QUIZ TIME!





ABM

ECDE

CDT

CMC

CHS

TSE

**BREAK**

**Do come back in 15  
minutes!**

Secret Code for Attendance:  
"Other: Crash Landing on you"





YEAR 1

YEAR 2

YEAR 3



## CHINESE MEDIA COMMUNICATIONS

**A UNIQUE BILINGUAL MEDIA COURSE THAT COVERS A RANGE  
OF CREATIVE MEDIA MODULES AND ALONG WITH MODULES IN  
CHINESE CULTURE, HISTORY AND LITERATURE**



ABM

ECDE

CDT

CMC

CHS

TSE



YEAR 1

YEAR 2

YEAR 3

- Get trained in writing and presentation skills in both Chinese and English alongside with practical skills for the media industry
  - Introduction to Mass Communication
  - Writing for Chinese Media
  - Audience Research
  - Video Production
  - Speech Communication in Chinese



ABM

ECDE

CDT

CMC

CHS

TSE



YEAR 1

YEAR 2

YEAR 3

- Hone skills in advertising, marketing and publicity as well as project development. Learn radio production skills and translation skills
  - Marketing and Publicity
  - Radio Production
  - Fundamentals of Translation
  - Project Development
  - Feature Production
    - Practical skills to produce video new stories etc



ABM

ECDE

CDT

CMC

CHS

TSE



YEAR 1

YEAR 2

YEAR 3

- Final-Year Project
  - Integrate and apply what they have learnt for the past 3 years. This module will include seminars, workshops and industry visits
- 6-Month Internship

ABM

ECDE

CDT

CMC

CHS

TSE





## 'O' LEVEL SUBJECTS AND GRADES

ELR2B2-B for AY 19/20: 12

English Language as a First Language: 1-6

Higher Chinese OR: 1-4

Chinese: 1-3

Mathematics (Elementary/Additional): 1-7

Any other subjects: 1-6



ABM

ECDE

CDT

CMC

CHS

TSE



## COMMON MISCONCEPTIONS / FAQs

Can my child become a DJ upon graduation

- No. Further studies in other areas are necessary. Students have to source for their own opportunities.

Is the whole course conducted in Chinese?

- No. With modules such as Academic Writing & Presentation and Business Communication and others, the course is conducted in 60% Chinese.

Is this course the same as Mass Communication & Media, but in Chinese?

- No, while CMC focuses on print and media, Mass Comm teaches students how to handle camera equipment.



ABM

ECDE

CDT

CMC

CHS

TSE





## FURTHER STUDIES

- University in Singapore
- Nanyang Technological University
- National University of Singapore
- Singapore Management University
- LASALLE College of the Arts
- SUSS University
- Overseas University in Taiwan, Hong Kong, and Australia

ABM

ECDE

CDT

CMC

CHS

TSE





ABM

ECDE

CDT

CMC

CHS

TSE

## INDUSTRY PARTNERS

- Singapore Press Holdings
- Mediacorp
- August Picture
- Wawa Pictures
- Clover Films

## CAREER PROSPECTS

- Editor
- Journalist
- Reporters and correspondents
- Graphic Designer
- Advertising and Promotions Manager
- Marketing Manager
- Marketing communication executive



# QUIZ TIME!





YEAR 1

YEAR 2

YEAR 3



## CHINESE STUDIES

ABM

ECDE

CDT

CMC

CHS

TSE

**THE ONLY DIPLOMA IN SINGAPORE CONDUCTED 65% IN  
CHINESE WITH THREE SPECIALIZATION: EDUCATION,  
BUSINESS AND EARLY CHILDHOOD TEACHING**





YEAR 1

YEAR 2

YEAR 3

- Gain a solid foundation in Chinese history, culture, literature, drama and communications; Learn fundamentals of translation
  - General History of China
  - Introduction to Chinese Cultural History
  - Introduction to Chinese Drama and Theatre
  - Introduction to Chinese Literature
  - Fundamentals of Translation
  - Speech Communication in Chinese



ABM

ECDE

CDT

CMC

CHS

TSE



YEAR 1

YEAR 2

YEAR 3

- Specialize in one of three tracks
  - Education Specialization
    - Language Lesson Planning and Teaching
  - Business Chinese
    - Marketing and Publicity
  - Early Childhood Teaching Track
    - Child Development 1
    - Motor Development
- Common Modules for Education and Business Specializations
  - Intermediate translation



ABM

ECDE

CDT

CMC

CHS

TSE



YEAR 1

YEAR 2

YEAR 3

- Specialize in one of three tracks
  - Education Specialization
    - Educational Technology
  - Business Chinese
    - Business Translation
  - Early Childhood Teaching Track
    - Curriculum Planning and Implementation
- Common Modules
  - Chinese Folklore and the Arts



ABM

ECDE

CDT

CMC

CHS

TSE



YEAR 1

YEAR 2

YEAR 3

- Specialize in one of three tracks (Internship)
  - Education Specialization
    - 6-month internship
    - Chinese Etymology and Modern Chinese Script
  - Business Chinese
    - 6-month internship
  - Early Childhood Teaching Track
    - 3-month internship
    - Working with the Exceptional Child



ABM

ECDE

CDT

CMC

CHS

TSE





## 'O' LEVEL SUBJECTS AND GRADES

ELR2B2-B for AY 19/20: 10

English Language as a First Language: 1-6

Higher Chinese OR: 1-4

Chinese: 1-2

Any other subjects: 1-6

Applicants must have also sat for a Humanities subject OR Art/Music OR Principles of Accounts and fulfill the aggregate computation requirements.



ABM

ECDE

CDT

CMC

CHS

TSE



ABM

ECDE

CDT

CMC

CHS

TSE

## FURTHER STUDIES

### Universities in China

- Zhejiang University
- Huazhong Normal University
- Shanghai University
- Shanghai International Studies University
- Fudan University

### Universities in Australia

- University of Queensland

CHS graduates get to enjoy up to one year's exemption for overseas degree programmes.

Education Track students may complete a 4-year degree course at NTU in 2 and a half years.





ABM

ECDE

CDT

CMC

CHS

TSE

## CAREER PROSPECTS

- Editor
- Interpreter/Translator
- Primary school Chinese Language Teacher (after further training at NIE)
- Preschool/Kindergarten Teacher
- Culture Guide and Promotions Manager

## INDUSTRY PARTNERS

- Singapore Press Holdings
- Ministry of Education
- Singapore Centre for Chinese Language
- Cutting Edge Productions



# QUIZ TIME!





YEAR 1

YEAR 2

YEAR 3



## TAMIL STUDIES WITH EARLY EDUCATION

THE ONLY DIPLOMA IN SINGAPORE CONDUCTED 65% IN  
TAMIL AND EQUIPS STUDENTS WITH KNOWLEDGE TO BE  
TAMIL PRESCHOOL TEACHERS AND ALSO KNOWLEDGE ON  
TAMIL CULTURE AND HISTORY.



ABM

ECDE

CDT

CMC

CHS

TSE



YEAR 1

YEAR 2

YEAR 3

- Get introduced to Tamil history, literature and culture alongside child development and early education principles.
  - Child Development 1 & 2
  - Motor Skills Development
  - Introduction to Tamil Language
  - Introduction to Tamil Culture and Society



ABM

ECDE

CDT

CMC

CHS

TSE



YEAR 1

YEAR 2

YEAR 3

- Continue cultural journey and explore more about the role of an educator and gain insights into the socio-emotional wellbeing of children children.
  - Child Safety, Health and Socio-emotional Well-Being
  - Introduction to Tamil Film and Performing Arts
  - Introduction to Tamil Children's Literature

ABM

ECDE

CDT

CMC

CHS

TSE





YEAR 1

YEAR 2

YEAR 3

- Learn more about curriculum planning, classroom management and the psychology of exceptional children.
  - Working with the Exceptional Child
  - Folklore and the Arts
  - Curriculum Planning and Implementation
- 3 months Student Internship Programme



ABM

ECDE

CDT

CMC

CHS

TSE





# 'O' LEVEL SUBJECTS AND GRADES

ELR2B2-B for AY 19/20: 22

English Language as a First Language: 1-6

Higher Tamil OR: 1-4

Tamil: 1-2

Any other subjects: 1-6

Applicants must also have sat for Mathematics (Elementary/Additional) and fulfill the aggregate computation requirements.



ABM

ECDE

CDT

CMC

CHS

TSE



# FURTHER STUDIES / CAREER PROSPECTS

## Further Studies

- University in Singapore
- National Institute of Education / Nanyang Technological University
- National University of Singapore
- Singapore University of Social Sciences

## Career Prospects:

- Tamil language preschool teacher
- Tamil language primary school teacher



ABM

ECDE

CDT

CMC

CHS

TSE

# QUIZ TIME!





ABM

ECDE

CDT

CMC

CHS

TSE

# HMS CCAS AND CLUBS



# HMS CCAS AND CLUBS

## **HMS Outreach Team (H.O.T)**

- Ambassador of HMS
- Reach out to the public to inform them about what HMS has to offer
- External events: RED camp, Open House, Parent's Seminars, Outreach Talks, and tours
- Internal events: Induction and Annual Bonding Camp

## **HMS Society (HMSS)**

- Student leadership team of HMS
- Plan school-wide events
- Events run by them include CSOP, HMS Got Talent, and Leadership Adventure Camp (LAC)

## **Young Advocating for the Younger (YAY) Club**

- Does events for young children
- Performances and events related to puppetry



ABM

ECDE

CDT

CMC

CHS

TSE

# HMS CCAS AND CLUBS

## Hua Yuan Club

- Set up by CHS and CMC students
- Aims to promote the Chinese culture and language
- Organise events related to the Chinese language including chinese calligraphy and promoting Chinese language in various secondary schools

## Compassionate Youths in Action (CYA)

- Voluntary basis
- Organise events with different organisations
- Works with different population groups, from children with underprivileged families to adults with mental illnesses.
- Collaborating with organisations to conduct events such as Ang Mo Kio FSC coaching, Reading Odyssey etc
- Anyone in HMS can sign up to be volunteers for the events



ABM

ECDE

CDT

CMC

CHS

TSE



# THANKS!

**Thank you for listening!**  
**Please practise on your PK because you're going to**  
**need it for Red Camp and Open House!**



CREDITS: This presentation template was created by Slidesgo, including  
icons by Flaticon, and infographics & images by Freepik



ABM

ECDE

CDT

CMC

CHS

TSE